

DataSMART® 558 T1/FT1 DSU/CSU



T1/FT1 Managed DSU/CSU for High Performance Network Access

The DataSMART® family of managed DSU/CSUs is the industry's leading family of high-performance network access products. All DataSMART T1/FT1 DSU/CSUs are compatible with Frame Relay, leased-line, and Internet services.

Convenient management features are available in DataSMART DSU/CSUs. Features include in-band access for remote management and an integrated Ethernet port for local management access.

Comprehensive diagnostic tools help resolve performance issues on the end-to-end leased line, or isolate problems in the Frame Relay local loop.

DataSMARTs can be remotely configured, software upgrades can be downloaded and important network events can be received via traps — all via in-band communications.

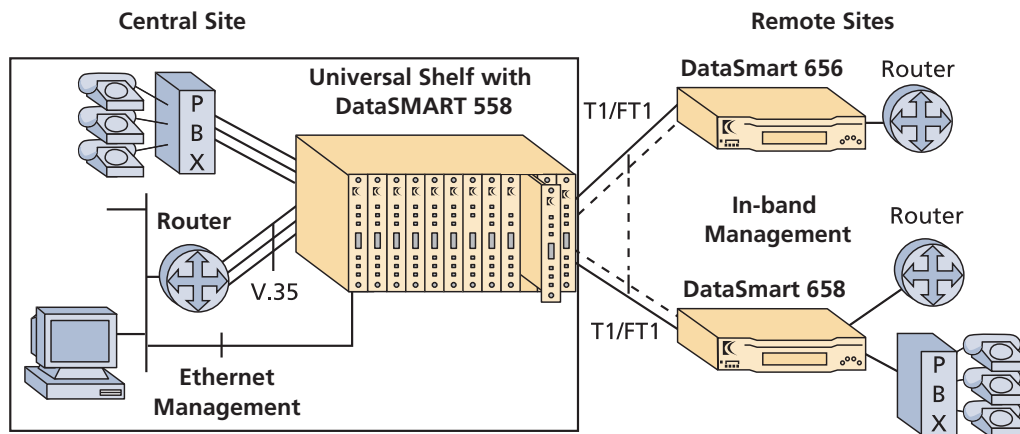
The DataSMART DSU/CSUs support data and voice applications such as Internet access, video teleconferencing, LAN-to-LAN communications, CAD/CAM and SNA applications.



Features

- **Supports leased-line, Frame Relay, and Internet services**
- **Standards-based, in-band management with embedded SNMP**
- **Easy local management with Telnet through 10Base-T Ethernet**
- **Remote setup and diagnostics**
- **Comprehensive T1/FT1 performance monitoring, control, and diagnostic tools**
- **Compatible with all leading voice, video, and data equipment**

KENTROX



The Universal Shelf with DataSMART plug-ins provides a management system for your entire T1/FT1 network. SNMP and Telnet access, via a single network connection to the shelf, are available to all local plug-ins and remote DataSMART 656 or 656 DSU/CSUs.

Advanced Management and Diagnostics

DataSMART DSU/CSUs have advanced features that enable you to take active control of your network, such as in-band SNMP, and an integrated Ethernet management port on the DataSMART 558. Comprehensive T1 diagnostic tools help you identify and resolve performance issues in the local loop before they affect service. With the DataSMART, you can remotely configure your units and receive SNMP traps for important network events.

Comprehensive Local Loop Monitoring

Poor line signal quality, framing violations, dropped packets, slow throughput, and other network errors can all be caused by problems in the local loop.

DataSMART DSU/CSUs provide a variety of circuit performance monitoring tools to help determine the health of your wide area network.

Standards-Based Management

The DataSMART embedded SNMP agent supports SETs, GETs and Traps, as well as standard MIBs, such as MIB II and the T1 MIB. And for comprehensive control, an enterprise MIB supports all available functions. These MIBs are available on our web site at www.kentrox.com/services.

ORDERING INFORMATION

DESCRIPTION	CATALOG #
DataSMART 558 T1 Add/Drop DSU/CSU w/ Ethernet	72558
Universal Shelf, 2 slot, DC	78070
48 VDC, 100 watts up to 1 shelf	72073-ACPS
48 VDC, 200 watts/100 watts redundant	72075-ACPS

BACK PANEL AND CABLE GUIDE CATALOG

1 To Network	
Stand-alone models	
DA15S to Stub	930xx111
DA15S to RJ48C Modular Plug	930xx151
DA15S to RJ48C Jack Adapter	77891
2-slot Shelf	
RJ48C Plug to RJ 48C Plug	930xx143
RJ48C Plug to RJ48C Plug, Crossover	930xx144
2 To Terminal Equipment (To terminal equipment only)	
DB25P to RJ48C Jack Adapter	77890
2-slot shelf	
RJ48C Plug to RJ48C Plug, Crossover	930xx144
3 To Control Terminal	
DE9S to RJ45 Adapter	78899
4 To Data Equipment	
DB25P to MRAC34S, 1 foot	95001074
DB25P to MRAC34S Adapter	78904

Protect your network investment with support plans and technical training

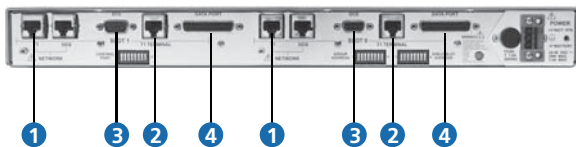
To keep your network healthy and productive, Kentrox offers maintenance options. Additionally, Kentrox technical training courses are available online, at your site, or at the Kentrox campus to help you get the most out of your Kentrox products. For details, visit our website at www.kentrox.com/support.

KENTROX MAINTENANCE OPTIONS CATALOG

Basic 5x8 electronic support	ServicePack1-Enterprise
Standard 24x7 NBD	ServicePack2-Enterprise
(next business day - covers out of warranty advance replacements)	

NOTE: xx denotes length of cable; contact factory for available lengths.

2-slot Universal Shelf for DataSMART 558



SPECIFICATIONS

NETWORK INTERFACE

Line Rate	T1 (1.544 Mbps)
Framing	SF, ESF, Ericsson
Line Code	AMI, B8ZS
Input Signal	DS-1 from 0 dB to -27 dB, typical
Output Signal	DS-1 with LBO 0, -7.5, -15 dB (selectable)
Mechanical	DA15 Plug, RJ48C socket (2-slot Shelf)
Lightning Protection	Withstands lightning surges defined per FCC Part 68 and recovers

TERMINAL INTERFACE

Line Rate	T1 (1.544 Mbps)
Framing	SF, ESF, Ericsson
Line Code	AMI, B8ZS
Input Signal	DSX-1 to -10 dB
Output Signal	DSX-1 with equalization
Mechanical	RJ48C socket (2-slot shelf), Special DB25 cable

DATA PORT INTERFACE

Bit Rates	Nx56 kbps or Nx64 kbps (N-1...24)
Electrical	RS-422 (EIA-530, RS-449) or V.35
Mechanical	DB25 socket (2-slot shelves)

MANAGEMENT

Control Ports	DCE and DTA, EIA-574, DE9 socket, Daisy chain, 38.4 kbps maximum, English menus, Async ASCII or SLIP/PPP
Ethernet Port	10Base-T RJ45 socket, Transmit and Link LEDs
SNMP Agent	MIB II (RFC 1213), DS1 MIB (RFC 1406), Enterprise MIB, Telnet server, Responds to PING; security filter for IP source addresses; up to 10 SNMP trap hosts
In-band	FDL link, dedicated DS0, or 8-kbps VC

ALARMS

Traps	SNMP Traps via SLIP/PPP or in-band
ASCII	Transmitted out async control port

LOCAL LOOP DIAGNOSTICS

Loop Tests	Line loopback, payload loopback, data port loopback
Line Test Codes	QRS, 3-in-24, 1-in-8, All 1s, All 0s
Data Test Codes	511, 2047
BERT Tester	Independent BERT on all test codes

PERFORMANCE MONITORING

Methodology	T1.403 in-band performance monitoring
Data Storage	Last 24 hours of data in 15 minute increments; last 7 days of data in 24 hour increments
Monitors	Network interface
Registers	Separate for carrier and user
Reports	Based on G.821 for performance, Far end, Alarm history, Network interface statistical

DIAGNOSTICS

LEDs	Power/fail, T1, Data port transmit, Data port receive, Data port CTS, Data port RTS
Loop Tests	Local loopback, Data terminal loopback

COMPATIBILITY

AT&T	TR 54016-1989, TR 62411-1990, TR 54019A, PUB 43802
ANSI	T1.403-1995
Bellcore	TR.194

REGULATORY

FCC Compliance	Part 68; Part 15, Class A
NRTL Listed	UL 1950, 3rd Edition
CSA	22.2; No. 950
IC	CS-03

ENVIRONMENT

Operating	0° to 50° C (5% to 90% RH, non-condensing)
Storage	-20° C to 66° C (5% to 65% RH)

POWER

AC	110 VAC, 60 Hz, 8W
DC	24 to 48 VDC, 7 watts

PHYSICAL

Usage	Rack mount
2-slot shelf	17" W x 1.75" H x 12" D, 8 lbs empty

For more information, visit www.kentrox.com, email info@kentrox.com or call 800-733-5511 or +1 614 798 2000.

05-04-013-4 8/11 Copyright © 2011 by Kentrox, Inc. All Rights Reserved. Kentrox is a registered trademarks of Kentrox, Inc. All other product names are trademarks of their respective owners. Information is correct at time of printing and is subject to change without notice. Kentrox is an Equal Opportunity/Affirmative Action employer.

KENTROX